

Southborough Allotments BONFIRES



Things to Consider

Controlled bonfires are permitted on our allotment sites

EXCEPT during June, July & August.

Before lighting a bonfire, tenants must pay attention to the following:

- Check wind direction to ensure smoke will not cause a nuisance to other tenants or residents nearby.
- **DO NOT** light a fire in damp or misty conditions.
- Dry material only to be burnt.

- Before you decide to start a bonfire, consider whether you can dispose of the waste in another way E.G. Bag up, take home and place in your green waste recycling bin, take to your local civic amenity tip, or compost. Most garden waste can be composted!

- Always check your bonfire incinerator and intended material for burning, for any signs of wildlife that may be hiding there.

- Make sure your bonfire incinerator is well maintained and in good condition. Incinerators in a poor condition represent a hazard and if found to be in use, could result in a Tenancy Termination Notice.



For further information and advice on bonfires, please contact:

Office Administrator

☎ 01892 529176

✉ admin@southboroughcouncil.co.uk



Get Composting!

It is ideal to have two compost areas, one for the current season's plant waste and one for the previous season.



A compost heap needs a good balance of carbon, nitrogen, air, and water, to produce the nutrient-rich, black, organic material that you can dig back into your soil to feed your crops.

An efficient heap can produce good compost in 9-12 months and the longer you leave it, the richer and darker it will be. This is why it is a good idea to have two heaps in use.

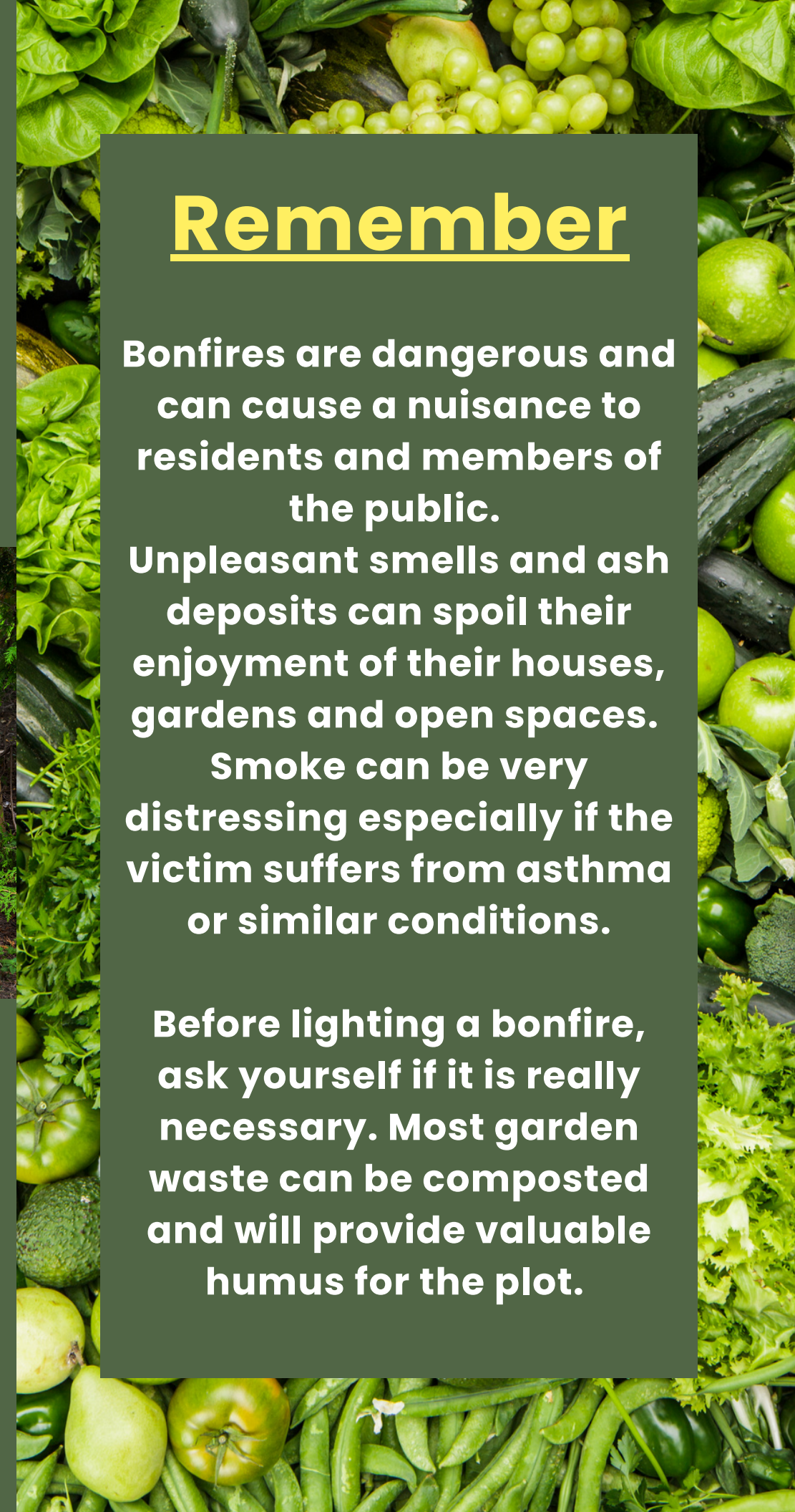
Remember

Bonfires are dangerous and can cause a nuisance to residents and members of the public.

Unpleasant smells and ash deposits can spoil their enjoyment of their houses, gardens and open spaces.

Smoke can be very distressing especially if the victim suffers from asthma or similar conditions.

Before lighting a bonfire, ask yourself if it is really necessary. Most garden waste can be composted and will provide valuable humus for the plot.



- **NEVER** burn any oily rags, rubber, plastics or other materials that create heavy smoke or toxic fumes.

- **DO NOT** burn anything containing plastic, foam or paint.

- **NEVER** use any accelerants or flammable substances.

- **NEVER** start a fire on a windy day, or in hot, dry, drought conditions.

- **NEVER** start an open fire. Always use a bonfire incinerator.

- **NEVER** leave a bonfire unattended and wait for all material to be burned down before leaving the site. Use soil or sand to smother the fire.

- **DO NOT** use water to douse the fire, as this can add heat to the ashes, which could reignite after you have left.